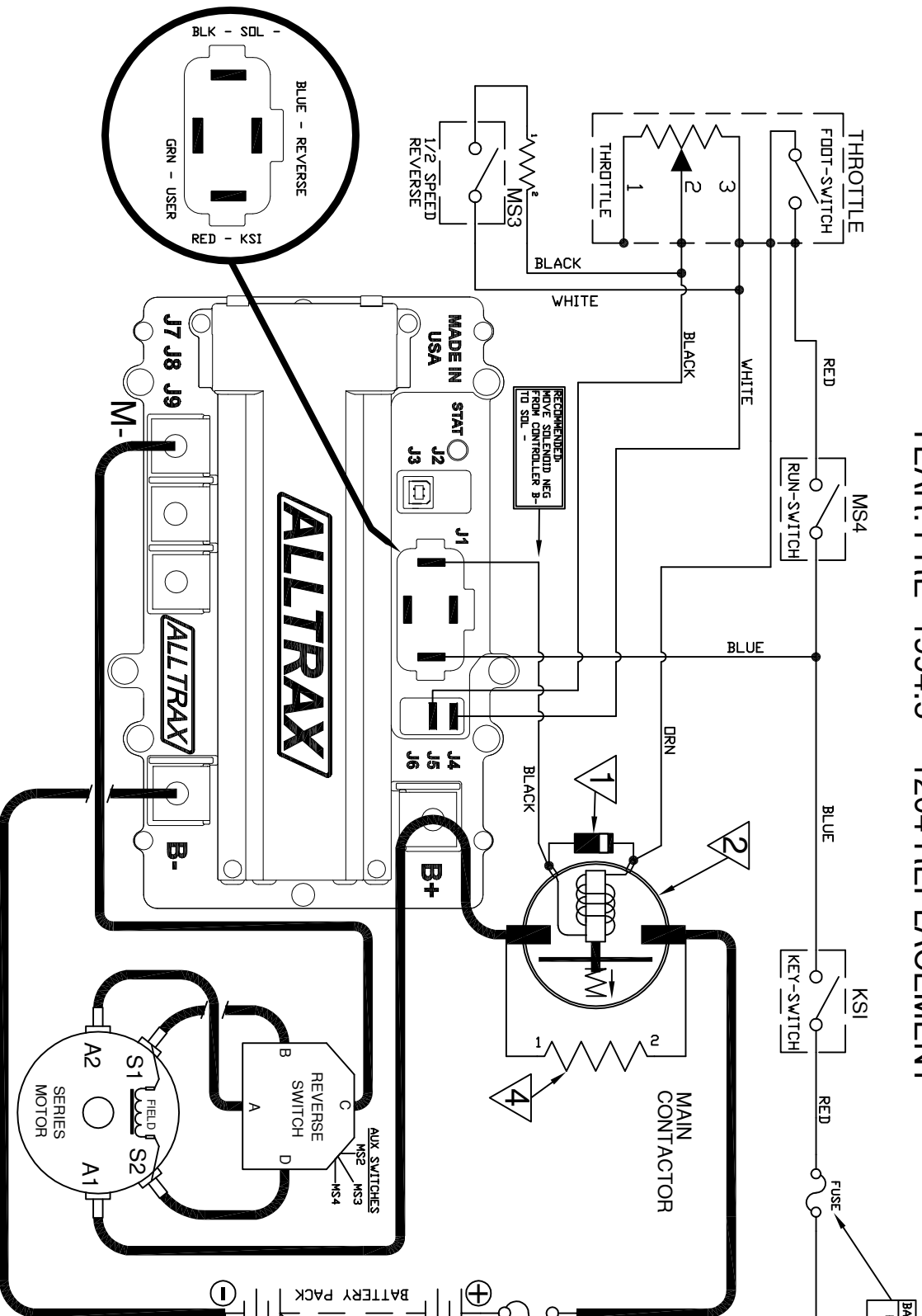


SR to E-Z-GO TXT YEAR: PRE- 1994.5 -- 1204 REPLACEMENT

PART NO. DOC110-040



BATTERY VDC	12-48V	72V
FUSE VDC RATING	60v	100v

1	DIODE RATING	DEM	CONTACTOR RATING	DEM
	1N4001	200A	300A	300A
	1N5408	400A	300A DR	400A
	HR754		400A TD	500A

2	CONTACTOR RATING	DEM	CONTACTOR RATING	300A
	200A	300A	300A DR	400A
	400A	400A	TD	500A

3	FUSE RATING	ANN250	CONTROLLER RATING	400A DR LESS
	ANN400	450A	DR	LESS

4	VOLTAGE	36V	RESISTOR RATING	250 OHM
	48V	470	OHM	10W
	72V	1000	OHM	10W

POWER WIRE RATING	6AWG-4AWG	CONTROLLER RATING	300A
	4AWG-2AWG	400A	400A
	2AWG-1/0AWG		500A

- NOTES:
- * FUSES REQUIRED FOR ALL INSTALLATIONS
 - * DIODE REQUIRED ACROSS COILS / RELAYS
 - * TOW/RUN SWITCH PREVENTS REGEN WHILE TOWING
 - * ASSUMES FOOTSWITCH IS OPEN WHEN THROTTLE OFF WITHOUT NOTICE
 - > ALLTRAX RESERVES THE RIGHT TO CHANGE DOCUMENTATION
 - > ALLTRAX MAKES NO WARRANTY AS TO THE ACCURACY, SUFFICIENCY, OR SUITABILITY OF ANY TECHNICAL OR OTHER INFORMATION PROVIDED
 - > SEE OPERATORS MANUAL FOR MORE INFORMATION

REVISIONS			
REV.	ECO.	DATE	APVD
A	033016	033016	RC

DO NOT SCALE DRAWING

ALLTRAX 1111 Cheney Creek Rd.
Grants Pass, OR 97527
PHONE:(541) 476-3565

TITLE
SR to EZGO Pre-1994 Meddlist
Wiring Diagram

SIZE DOCUMENT NO.
A DOC110-040

REV. SHEET 1 of 1