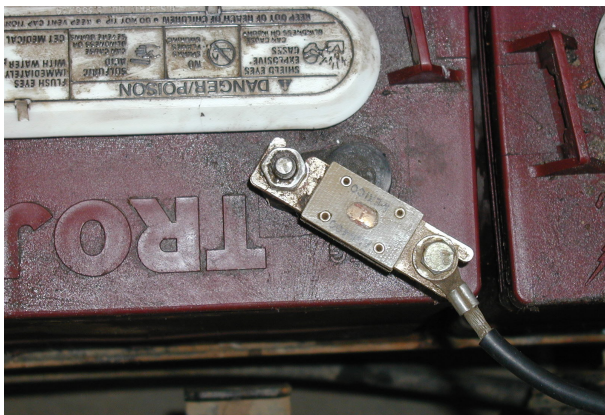


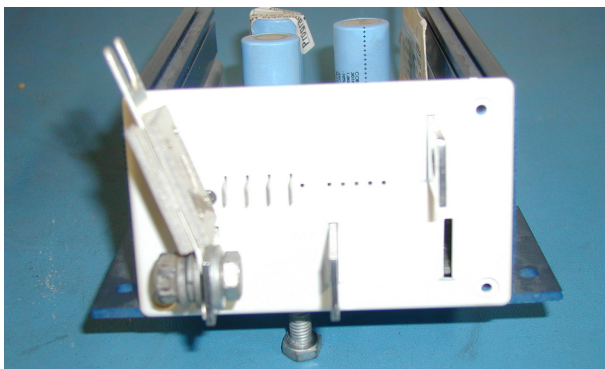
**FUSE INSTALLATION GUIDE**

Alltrax recommends that all motor controller applications have a fuse in the battery circuit. Many vehicles do not have a fuse. Follow these guidelines to determine a suitable location. The fuse may be installed anywhere in the battery string or at either [+] or [-] end of the battery pack where it connects to the controller or solenoid.

Controller Rated Current:	Recommended Fuse:
400 amps or less	ANN250 Bussman or Littlefuse
450 amps or more	ANN400 Bussman or Littlefuse



Example 1: On Battery



Example 2: On Controller B- bar

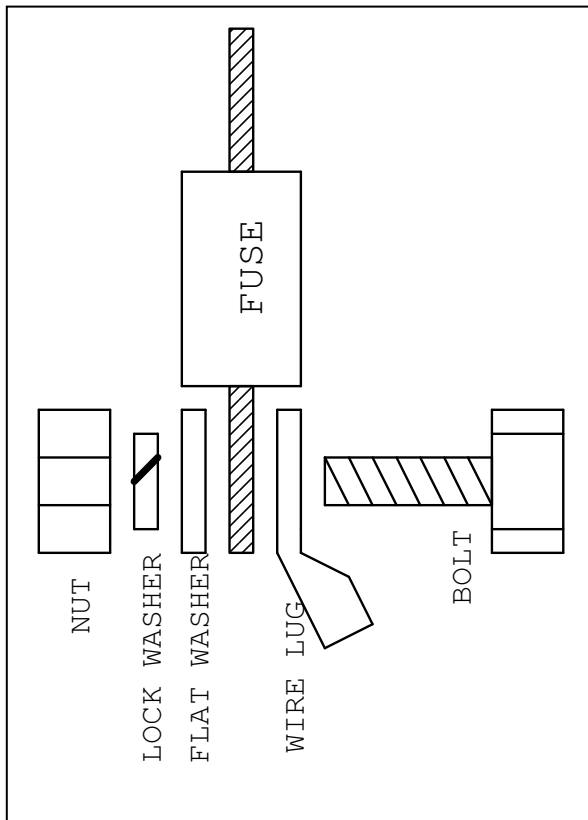


Diagram: Fuse terminal hardware

For Technical Assistance, please call 541-476-3565  
ALLTRAX, Inc., 1111 Cheney Creek Rd. Grants Pass,  
OR 97527 541-476-3565