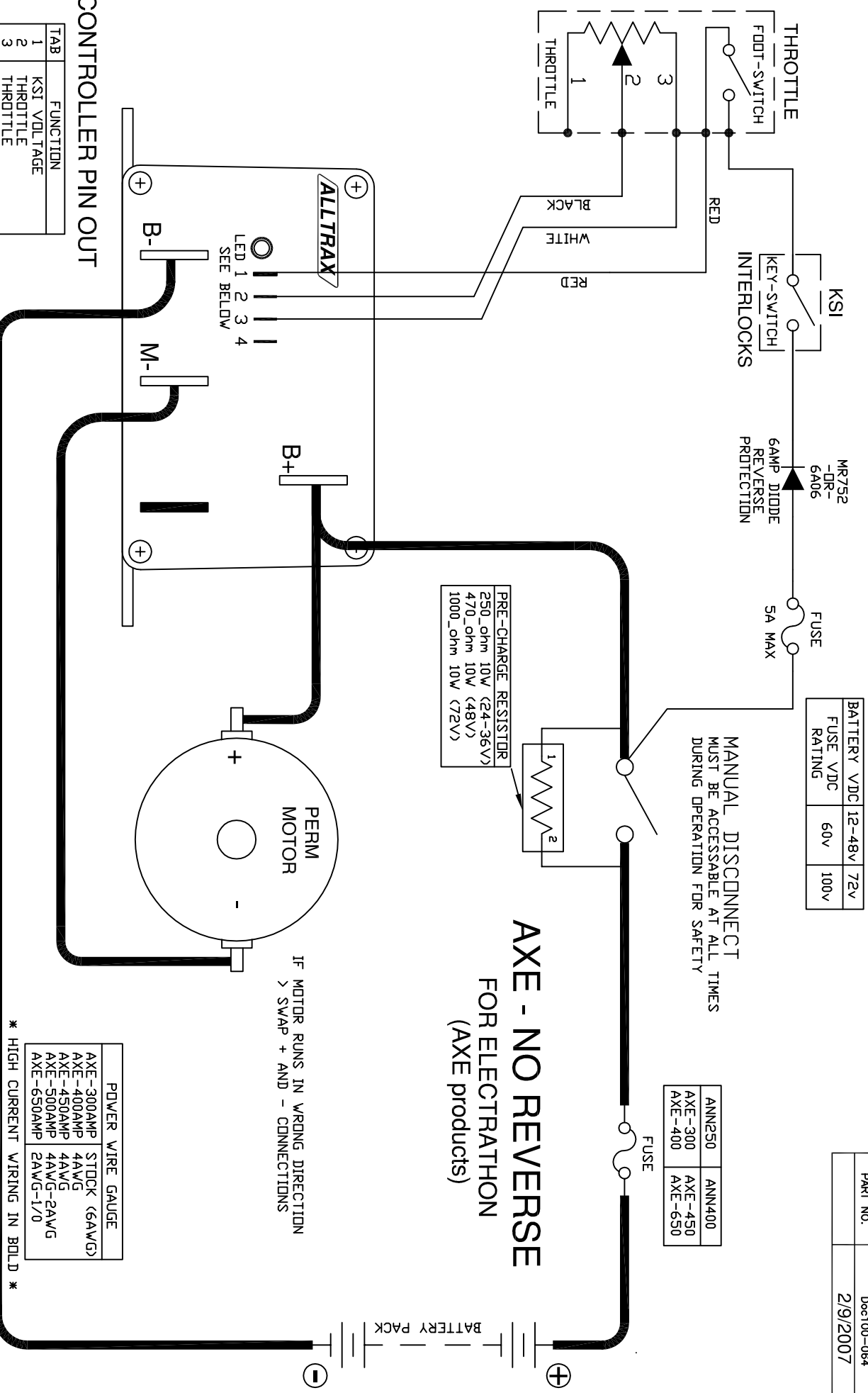


BATTERY VDC	12-48V	72V
FUSE VDC RATING	60V	100V

ANN250	ANN400
AXE-300	AXE-450
AXE-400	AXE-650

MANUAL DISCONNECT MUST BE ACCESSIBLE AT ALL TIMES DURING OPERATION FOR SAFETY



PRE-CHARGE RESISTOR

250_ohm	10W (24-36V)
470_ohm	10W (48V)
1000_ohm	10W (72V)

POWER WIRE GAUGE

AXE-300AMP	STOCK (6AWG)
AXE-400AMP	4AWG
AXE-450AMP	4AWG
AXE-500AMP	4AWG-2AWG
AXE-650AMP	2AWG-1/0

* HIGH CURRENT WIRING IN BOLD *

CONTROLLER PIN OUT

TAB	FUNCTION
1	KSI VOLTAGE
2	THROTTLE
3	THROTTLE
4	1/2 SPEED REVERSE
B+	BATTERY POSITIVE
B-	BATTERY NEGATIVE
M-	MOTOR MINUS

NOTES:

- > FUSES REQUIRED FOR ALL INSTALLATIONS
- > DIODE REQUIRED ACROSS COILS / RELAYS
- > PRE-CHARGE RESISTOR REQUIRED
- > ASSUMES FOOTSWITCH IS OPEN WHEN THROTTLE OFF WITHOUT NOTICE
- > ALLTRAX RESERVES THE RIGHT TO CHANGE DOCUMENTATION
- > ALLTRAX MAKES NO WARRANTY AS TO THE ACCURACY, SUFFICIENCY, OR SUITABILITY OF ANY TECHNICAL OR OTHER INFORMATION PROVIDED
- > SEE OPERATORS MANUAL FOR MORE INFORMATION

REVISIONS		DWG SCALE: NTS		TITLE	
REV.	ECO.	DATE	APVD	DRAWN	R CSUK
A	020907	020907	RC	ENGR	R CSUK
<p>THIS TECHNICAL DATA IS PROPRIETARY AND SHALL NOT BE REPRODUCED, RELEASED, OR DISCLOSED IN WHOLE OR IN PART WITHOUT THE WRITTEN PERMISSION OF ALLTRAX INC.</p>					
ALLTRAX			1111 Cheney Creek Rd. Grants Pass, OR 97527 PHONE:(541) 476-3565		
AXE - ELECTRATHON			Wiring Diagram		
SIZE	DOCUMENT NO.	REV.	DO NOT SCALE DRAWING		
A	S	Doc100-064	SHEET 1 of 1		