



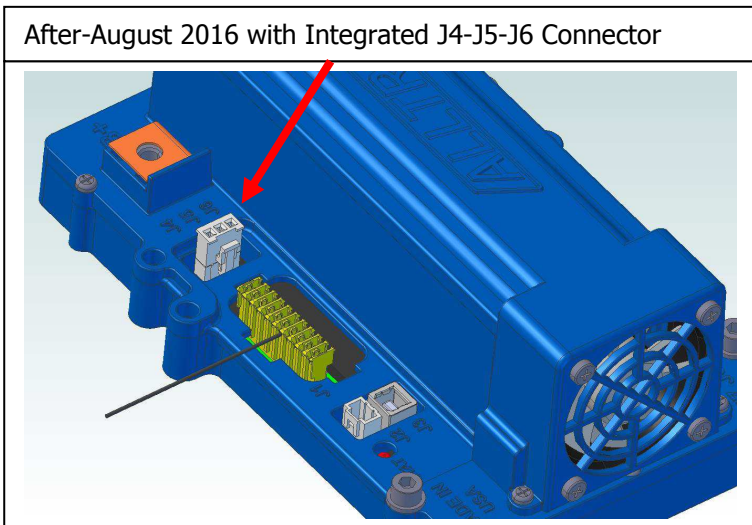
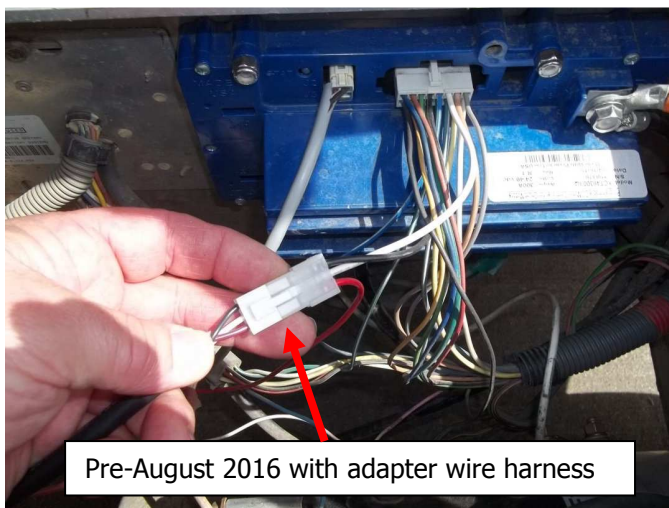
## Alltrax XCT Function Knob Boxes: FN2 for XCT REGEN Motor Controllers

File: DOC113-016-A\_FN2-XCT\_Operators-Manual.pdf, Released Rev A, EC-051216  
**ALLTRAX PN: FN2-XCT**

The XCT motor controllers have "User Inputs" or commonly called Personality Switches that allow for set user profiles or interactive adjustments of Speed or Regen while driving. XCT Controllers PRIOR to AUGUST 2016 may not have the FN 3-pin integrated connector in J4-J5-J6 connector well (See WEB SITE for serial number cutoff). An adapter kit for all older controllers taps into the carts wire harness.

Use TOOLKIT software (Version 3.0 or above) to enable the new Function Control features. Newer XCT controllers built ON or AFTER August 2016 will have the 3-pin connector to directly plug the FN boxes into the XCT controller J4-J5-J6.

**FN2  
 Dual Potentiometer**



Download the latest Alltrax TOOLKIT Version 3.0 (or above) from the Alltrax web site: [www.alltraxinc.com](http://www.alltraxinc.com).

Using toolkit the function knob pertains to the control bar in the software. You can set the Minimum and max values that correlate to the full left of the knob (CCW) and the max value slider for the full right knob (CW)

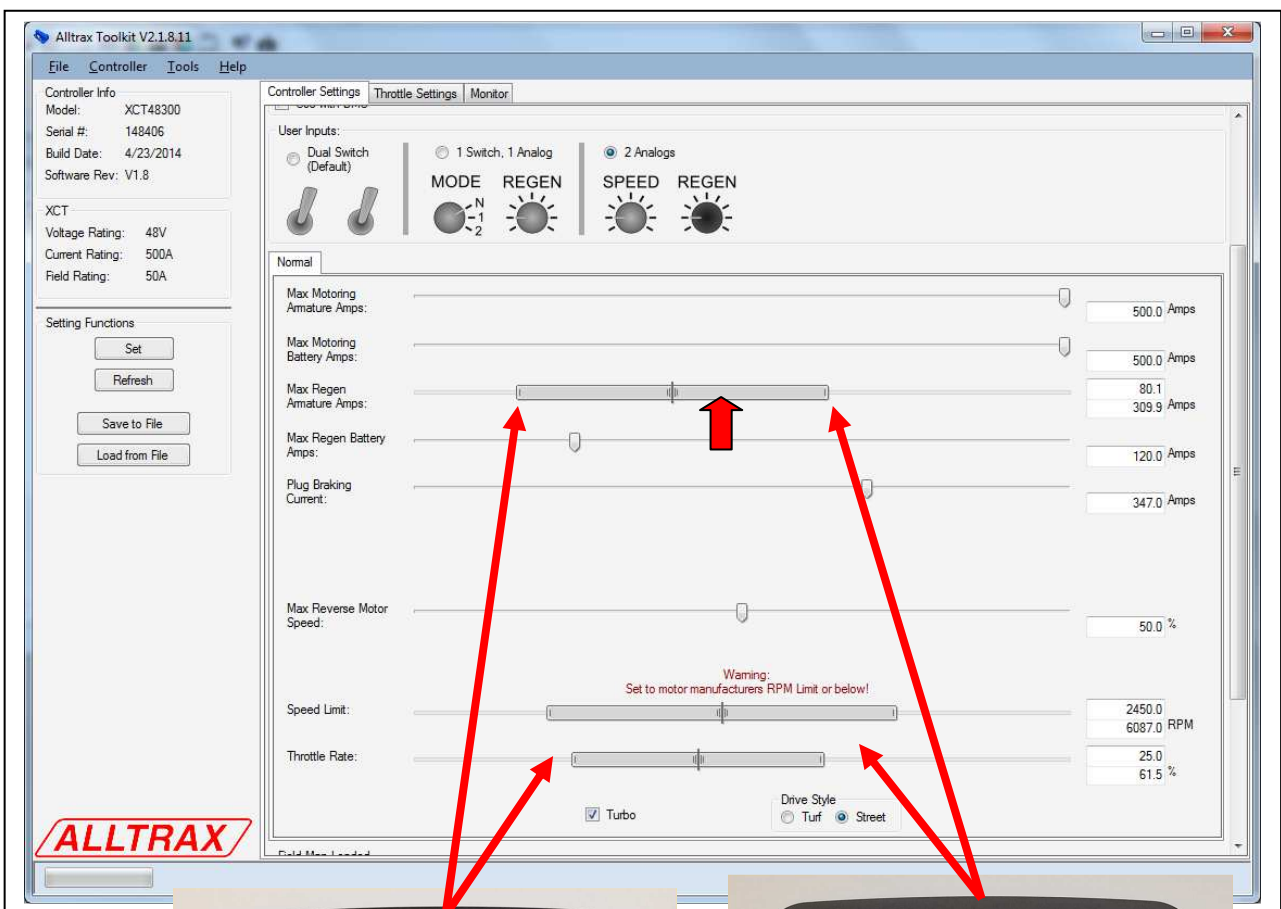
Click the 2-Analogs Input radio button to activate the FN2 control box.



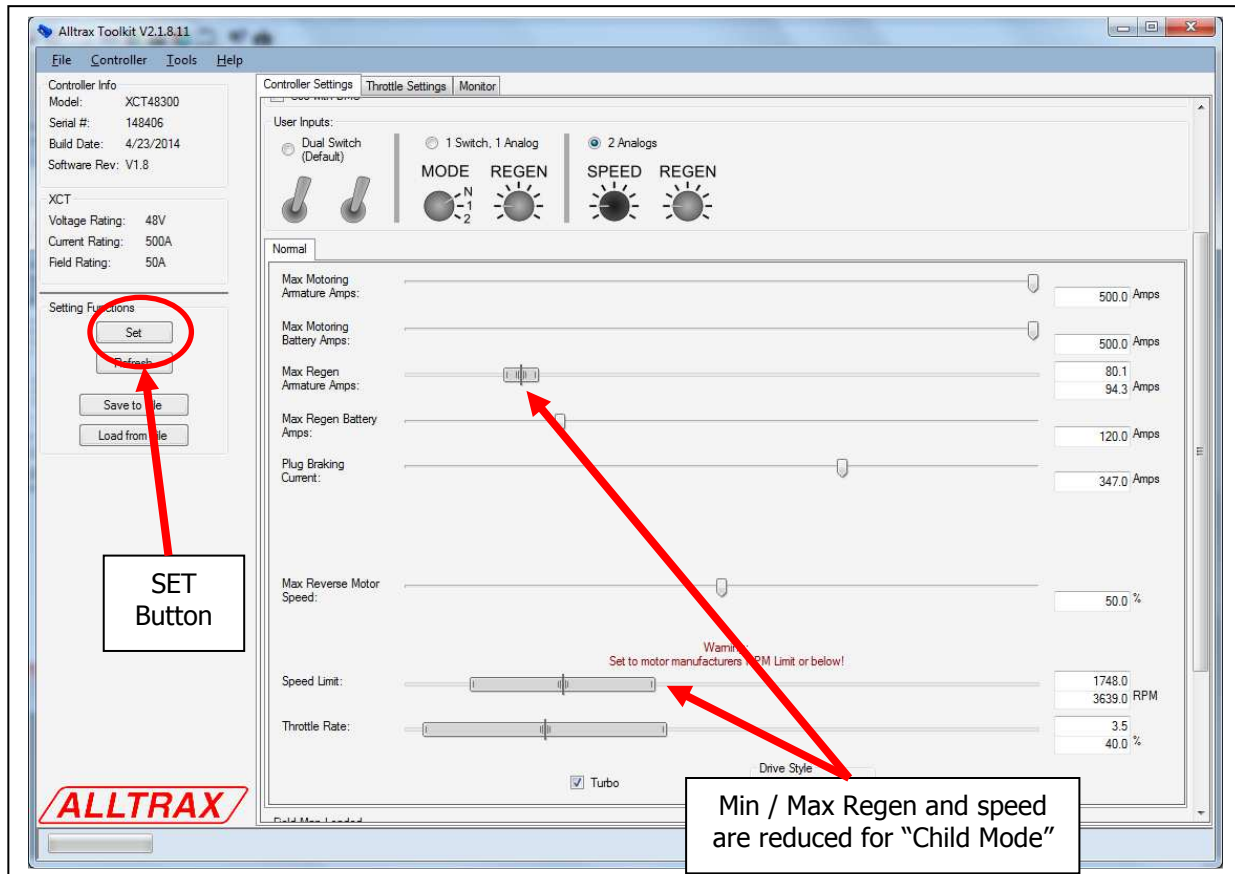
With the "SPEED" and "Throttle Rate" tied together in software, you can adjust both sliders for "mild to wild" so when the Speed or Regen pot are full left minimum, the throttle rate AND the speed are soft and slow and the Regen is soft and will coast. When the knobs are at full right (Clock wise) is fast and wild. You can tune these two parameters for driving style. With the knob to full left, you save power and reduce battery draw, at full right (in this example) its full power performance mode as shown below.

In this example, the speed limit RPM is spread across 2450 to 6087RPM (depends on the motor RPM limits) and Regen is set for a soft 80 amps up to a crawling down a steep grade 300amps.

The software also has a feature to "Highlight the knob" when you hover over the slider bar down below. This helps identify which slider you're affecting. In this example the mouse (red arrow) is hovering over the REGEN slider making the regen knob highlighted.



When the kids come over, set the box for mild mode. Then they can't get into too much trouble.



Once you have your settings configured – PRESS SET to program the controller and you're all done!

If you have any feedback or comments for these instructions, please email [info@alltraxinc.com](mailto:info@alltraxinc.com) as we value our customers input, we make feature rich performance products based on our customers input.

Made in USA