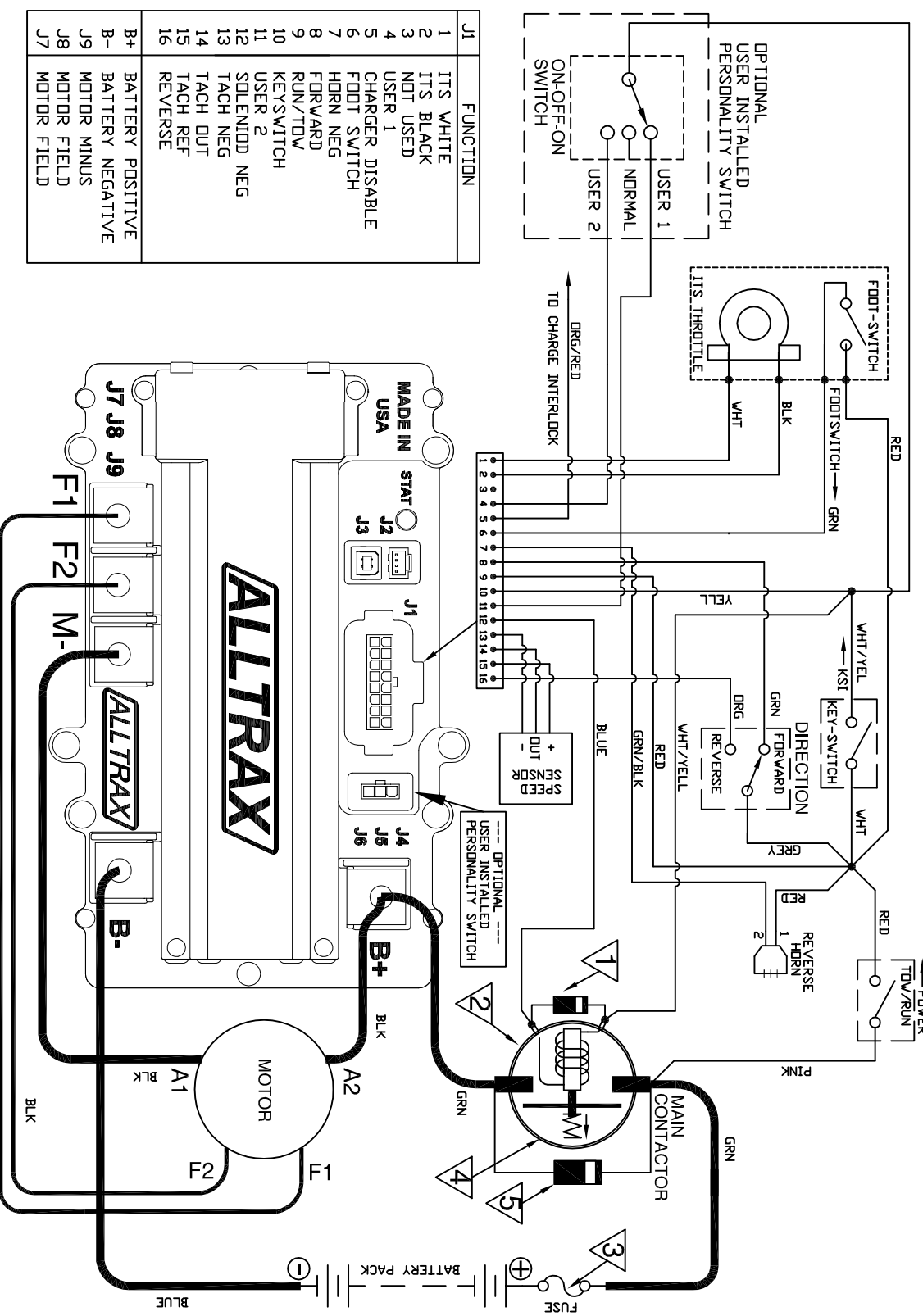
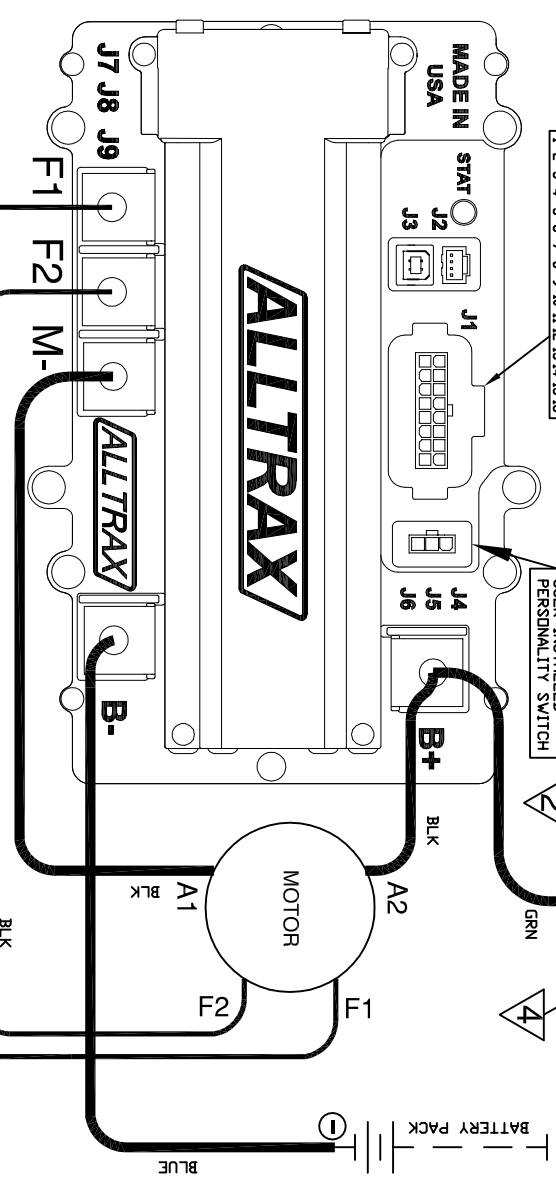


XCT/NCT to EZGO TXT 48 FOR SHUNT (SEPERATELY EXCITED) WOUND MOTORS



J1	FUNCTION
1	ITS WHITE
2	ITS BLACK
3	NOT USED
4	USER 1
5	CHARGER DISABLE
6	FOOT SWITCH
7	FORW NEG
8	DRN NEG
9	RUN/TOW
10	KEYSWITCH
11	USER 2
12	SOLENOID NEG
13	TACH NEG
14	TACH DUT
15	TACH REF
16	REVERSE



- NOTES:**
- * FUSES REQUIRED FOR ALL INSTALLATIONS
 - * DIODE REQUIRED ACROSS COILS / RELAYS
 - * TOW/RUN SWITCH PREVENTS REGEN WHILE TOWING
 - > ASSUMES FOOTSWITCH IS OPEN WHEN THROTTLE OFF
 - > ALLTRAX RESERVES THE RIGHT TO CHANGE DOCUMENTATION WITHOUT NOTICE
 - > ALLTRAX MAKES NO WARRANTY AS TO THE ACCURACY, SUFFICIENCY, OR SUITABILITY OF ANY TECHNICAL OR OTHER INFORMATION PROVIDED
 - > SEE OPERATORS MANUAL FOR MORE INFORMATION

PART NO.	DOC110-016
----------	------------

1	DIODE RATING	1N4001 1N5408 MR754	CONTACTOR RATING	DEM 200A 200A 400A
2	CONTACTOR RATING	DEM 200A 200A 400A	CONTROLLER RATING	300A 300A DR 400A TD 500A
3	FUSE	ANN250 ANN250 ANN400	CONTROLLER RATING	400A DR LESS 450A DR MORE

- 4** PRE-CHARGE RESISTOR NOT NEEDED ON XCT UNITS
- 5** REGEN DIODE REQUIRED USE: ALLTRAX PN KIT-EZ-DIODE-T DR 6A6 DIODE (6A 660V)

POWER WIRE RATING	CONTROLLER RATING
6AWG-4AWG	300A
4AWG-2AWG	400A
2AWG-1/0AWG	500A

REVISIONS		DWG SCALE: NTS		TITLE	
REV.	ECO.	DATE	APVD	DRAWN	R CSUK
E	092616	092616	RC	ENGR	D.Crockett
<p>THIS TECHNICAL DATA IS PROPRIETARY AND IS THE PROPERTY OF ALLTRAX INC. ANY REPRODUCTION, RELEASE, OR DISCLOSURE IN WHOLE OR IN PART WITHOUT THE WRITTEN PERMISSION OF ALLTRAX INC. IS PROHIBITED.</p>					
<p>ALLTRAX 1111 Cheney Creek Rd. Grants Pass, OR 97527 PHONE:(541) 476-3565</p>			<p>XCT to E-Z-GO TXT-48 Wiring Diagram</p>		
<p>FILE: _DWG-XCT-EZGO-TXT-48-wire-dia.dwg</p>			<p>SIZE DOCUMENT NO. DOC110-016</p>		
<p>SHEET 1 of 1</p>			<p>REV. E</p>		