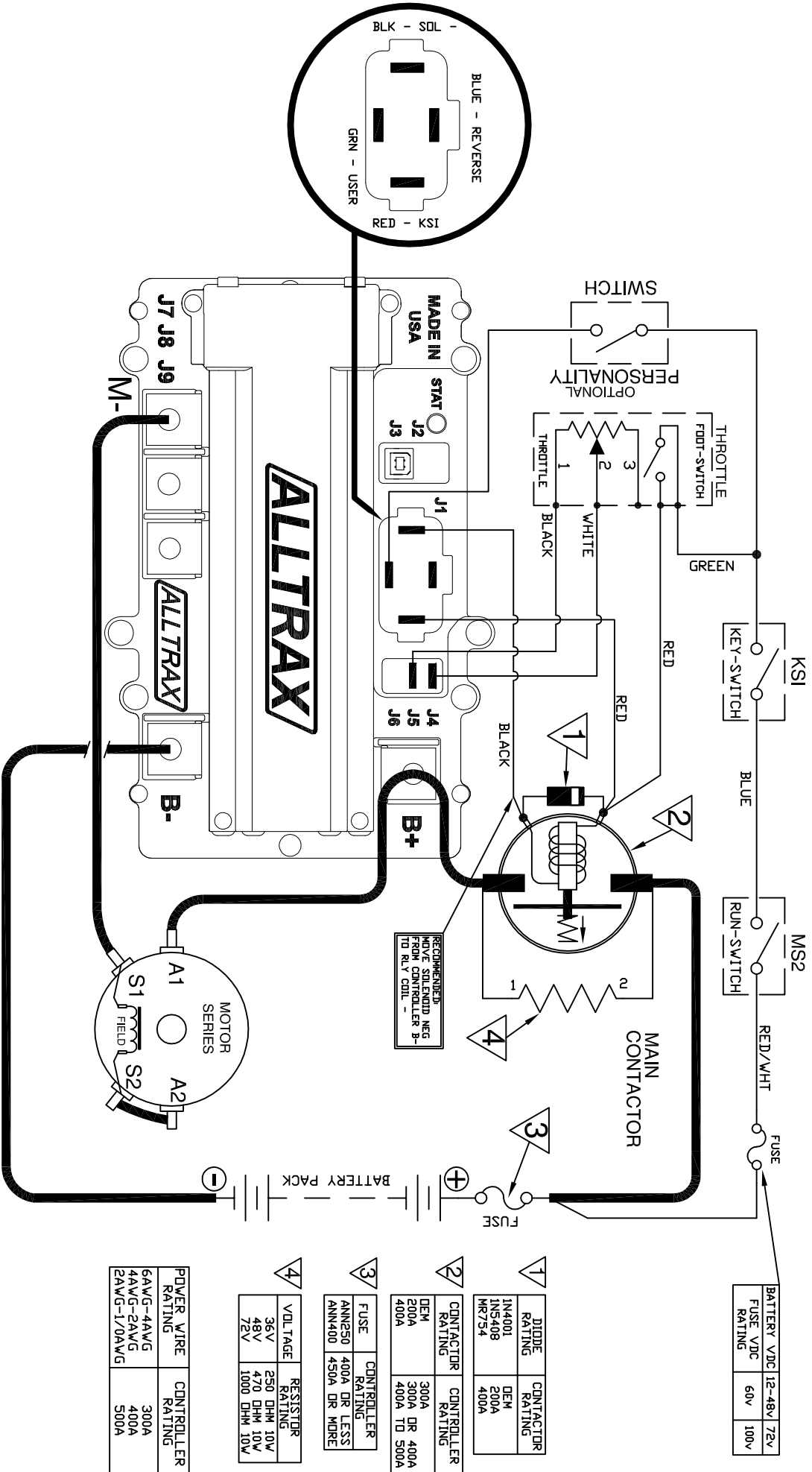


SR - GENERIC WIRING NO REVERSE



- NOTES:
- * FUSES REQUIRED FOR ALL INSTALLATIONS
 - * DIODE REQUIRED ACROSS COILS / RELAYS
 - * KSI IS REQUIRED TO BE A SWITCHED INPUT, NOT RESISTIVE
 - > ASSUMES FOOTSWITCH IS OPEN WHEN THROTTLE OFF
 - > ALLTRAX RESERVES THE RIGHT TO CHANGE DOCUMENTATION WITHOUT NOTICE
 - > ALLTRAX MAKES NO WARRANTY AS TO THE ACCURACY, SUFFICIENCY, OR SUITABILITY OF ANY TECHNICAL INFORMATION PROVIDED
 - > SEE OPERATORS MANUAL FOR MORE INFORMATION

REVISIONS		DWG SCALE: NTS		TITLE	
REV.	ECO.	DATE	APVD	DRWNG	ENGGR
A	033016	033016	RC	R	CSUK
B	032217	032217	RC	D	Crockett

1111 Cheney Creek Rd. Grants Pass, OR 97527 PHONE:(541) 476-3565
--

SR to Generic Series No Reverse Wiring Diagram
DOC110-038
REV. B

DO NOT SCALE DRAWING

POWER WIRE RATING	CONTROLLER RATING
6AWG-4AWG	300A
4AWG-2AWG	400A
2AWG-1/0AWG	500A

VOLTAGE	RESISTOR RATING
36V	250 OHM 10W
48V	470 OHM 10W
72V	1000 OHM 10W

FUSE	CONTROLLER RATING
ANN250	400A DR LESS
ANN400	450A DR WIRE

DIODE RATING	CONTACTOR RATING
1N4001	DEM
1N5408	200A
MR754	400A

CONTACTOR RATING	CONTROLLER RATING
DEM	300A DR 400A
200A	300A DR 400A
400A	400A TD 500A

PART NO.	DOC110-038
----------	------------