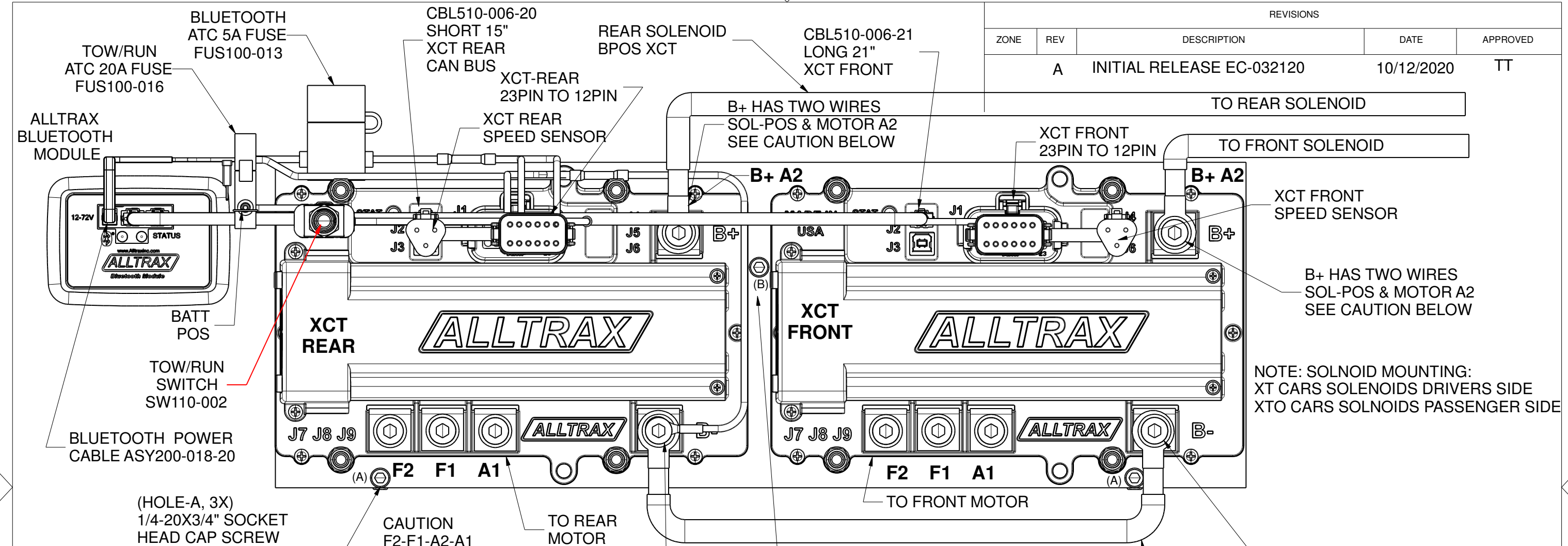


REVISIONS				
ZONE	REV	DESCRIPTION	DATE	APPROVED
A		INITIAL RELEASE EC-032120	10/12/2020	TT



**BAD BOY POWER PANEL**  
**ASY105-001-20**

- ASY200-017-20 TOW/RUN POWER CABLE
- ASY200-018-20, BLUETOOTH POWER CABLE
- HNS105-001-20, BBB XT AND XTO HARNESS
- MET100-068-10-AL
- XCT-48500-BBB WITH BBB-CONFIG
- BLUETOOTH CONTROL MODULE

- ALLTRAX PROCESS, ON BOTH CONTROLLERS:**
- LOAD HEX FILE: \_XCT MAIN\_2\_BBB (V4.8)\_.hex
  - LOAD CONFIG: Config-BBB-XT-XTO-V2.txt (or config Config-BB2-V2 for single controller)
  - LOAD REAR FIELD MAP: FieldCurve\_DA8-4013-R-BBB-V1 (Also BB2 single controller)
  - LOAD FRONT FIELD MAP: FieldCurve\_DA7-4009-F-BBB-V1
  - CHANGE THROTTLE TO (0-5V)
  - SET FRONT AND REAR CONTROLLER TO 96% THROTTLE
  - SET FACTORY DEFAULTS
  - INCLUDE DOC113-006 & DOC113-027 OP MANUAL
  - INCLUDE ASY105-001-20-01 DWG
  - INCLUDE HNS105-001-20-01 DWG

Tolerances:  
 0.x = ± 0.1"  
 0.xx = ± 0.03"  
 0.xxx = ± 0.005"  
 Angular: ± 1°  
 Edge Breaks: 0.01" - 0.015"

THESE DESIGNS AND SPECIFICATIONS ARE THE PROPERTY OF ALLTRAX INC AND SHALL NOT BE COPIED OR USED FOR MANUFACTURING WITHOUT IT'S WRITTEN CONSENT.

EC-032120

**MATERIAL:**

**FINISH:**

DRAWN T.THORNE	DATE 2/10/2020
CHECKED	
QA	
MFG	
APPROVED	

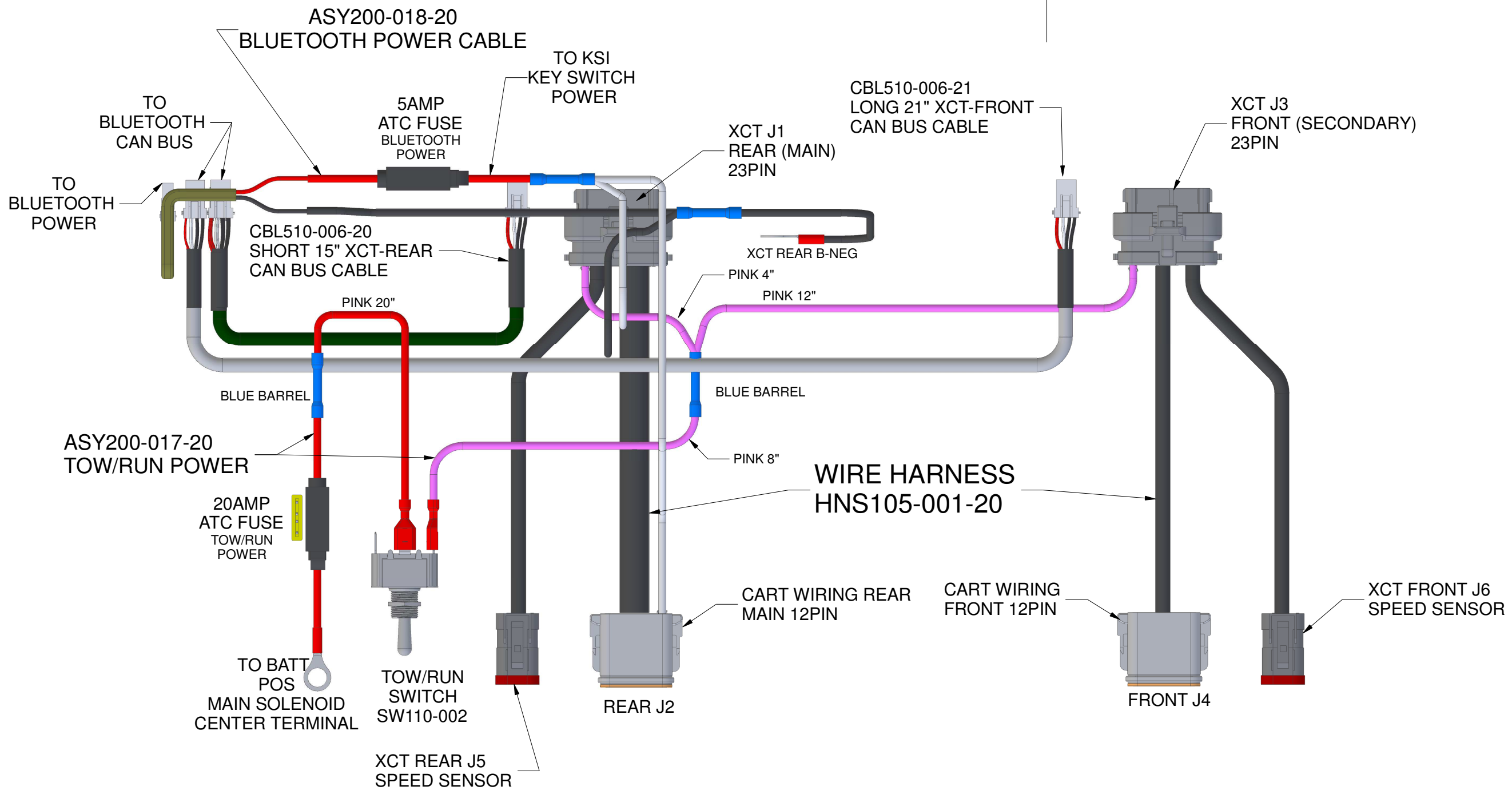
**ALLTRAX INC**

**DWG ASY BAD BOY BOY BUGGIES**  
**XCT DUAL CONTROLLER**

SIZE <b>B</b>	FSCM NO.	DWG NO. ASY105-001-20-01	REV A
SCALE 1:2	SHEET 1 of 3		

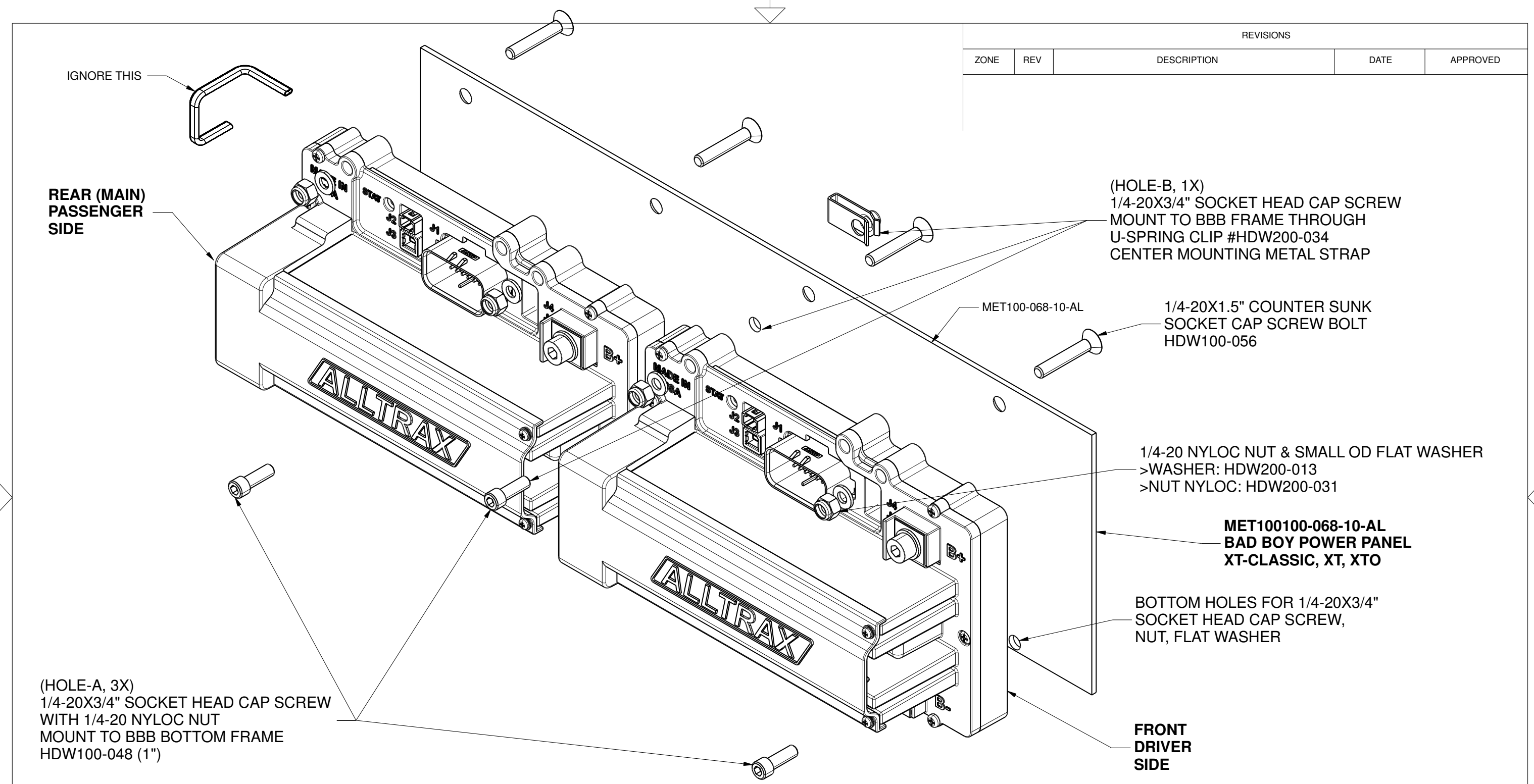
REDLINES 8/12/2020  
 FUS110-012, 400AMP 2PC?  
 UPDATE HEX AND CONFIG FILE VERSIONS  
 TO AS BUILT & TESTED 8/12/2020

REVISIONS				
ZONE	REV	DESCRIPTION	DATE	APPROVED



Tolerances:  
 0.x = ± 0.1"  
 0.xx = ± 0.03"  
 0.xxx = ± 0.005"  
 Angular: ± 1°  
 Edge Breaks: 0.01" - 0.015"

THESE DESIGNS AND SPECIFICATIONS ARE THE PROPERTY OF ALLTRAX INC AND SHALL NOT BE COPIED OR USED FOR MANUFACTURING WITHOUT IT'S WRITTEN CONSENT.	DRAWN T.THORNE	DATE 2/10/2020	<b>ALLTRAX INC</b>	
	CHECKED			
	QA		<b>DWG ASY BAD BOY BUGGIES XCT DUAL CONTROLLER</b>	
	MFG			
<b>MATERIAL:</b>	APPROVED		SIZE <b>B</b> FSCM NO.    DWG NO. ASY105-001-20-01    REV <b>A</b>	
<b>FINISH:</b>			SCALE 1:2    SHEET 2 of 3	



REVISIONS				
ZONE	REV	DESCRIPTION	DATE	APPROVED

(HOLE-A, 3X)  
 1/4-20X3/4" SOCKET HEAD CAP SCREW  
 WITH 1/4-20 NYLOC NUT  
 MOUNT TO BBB BOTTOM FRAME  
 HDW100-048 (1")

(HOLE-B, 1X)  
 1/4-20X3/4" SOCKET HEAD CAP SCREW  
 MOUNT TO BBB FRAME THROUGH  
 U-SPRING CLIP #HDW200-034  
 CENTER MOUNTING METAL STRAP

1/4-20X1.5" COUNTER SUNK  
 SOCKET CAP SCREW BOLT  
 HDW100-056

1/4-20 NYLOC NUT & SMALL OD FLAT WASHER  
 >WASHER: HDW200-013  
 >NUT NYLOC: HDW200-031

**MET100100-068-10-AL**  
**BAD BOY POWER PANEL**  
**XT-CLASSIC, XT, XTO**

BOTTOM HOLES FOR 1/4-20X3/4"  
 SOCKET HEAD CAP SCREW,  
 NUT, FLAT WASHER

Tolerances:  
 0.x = ± 0.1"  
 0.xx = ± 0.03"  
 0.xxx = ± 0.005"  
 Angular: ± 1°  
 Edge Breaks: 0.01" - 0.015"

THESE DESIGNS AND SPECIFICATIONS ARE THE PROPERTY OF ALLTRAX INC AND SHALL NOT BE COPIED OR USED FOR MANUFACTURING WITHOUT IT'S WRITTEN CONSENT.	DRAWN T.THORNE	DATE 2/10/2020	<b>ALLTRAX INC</b>  <b>DWG ASY BAD BOY BUGGIES</b> <b>XCT DUAL CONTROLLER</b>	
	CHECKED			
	MATERIAL:	QA		SIZE <b>B</b>
FINISH:	MFG		DWG NO. ASY105-001-20-01	REV A
	APPROVED		SCALE 1:2	SHEET 3 of 3